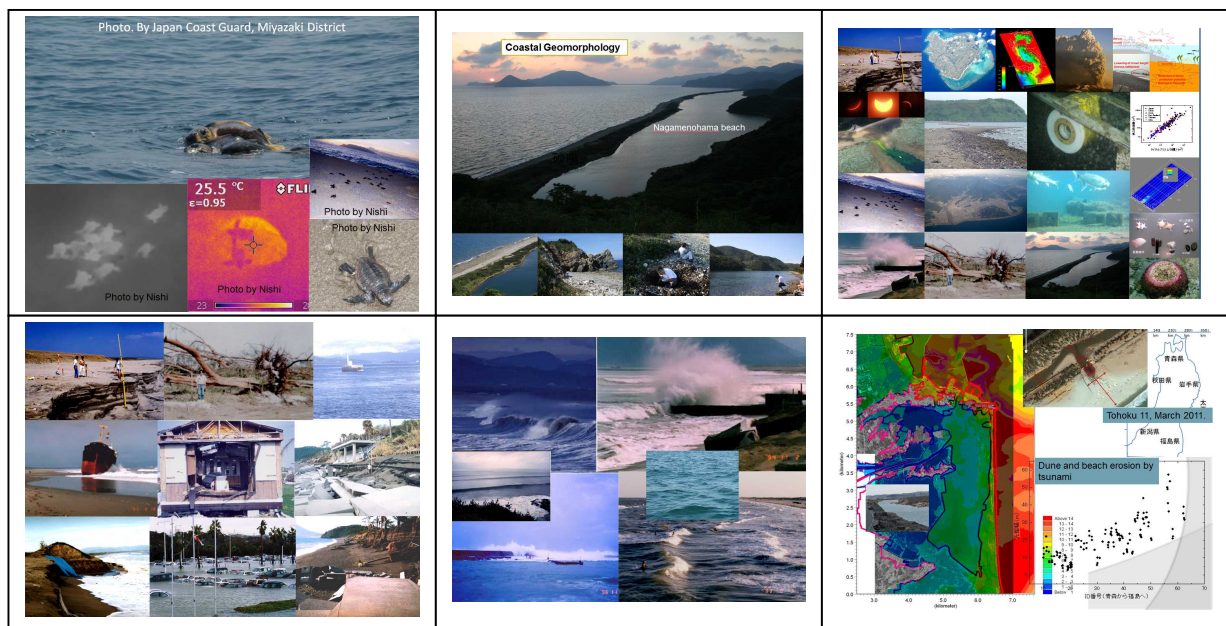


Research activities in Coastal Science, Coastal Engineering and Nearshore Oceanography

Contact: Marine Biology and Oceanography Division
Faculty of Fisheries, Kagoshima University
Shimoarata 4-50-20, Kagoshima, 890-0056, Japan
Tel. & Fax +81-99-286-4101

Email; sediment_24@hotmail.com, nishi24@fish.kagoshima-u.ac.jp



Profession:

- Dept. of Ocean Civil Engineering, Faculty of Engineering, Kagoshima University (1984-2006)
- Visiting researcher at Coastal and Oceanographic Engineering Department, University of Florida (199-1992)
- Conrad Blucher Institute of Surveying and Science, Texas A&M – Corpus Christi (Summer seasons 1993-1996)
- Coastal and Hydraulic Laboratory, Waterways Experiment Station, REDC (short terms)
- Marine Biology and Oceanography Division, Faculty of Fisheries, Kagoshima University (2006 – current)
- Director of General Arts Department, Education Centre, Kagoshima University (2009-2010)
- Director of Higher Education Research and Development, Education Centre, Kagoshima University (2011-2012)
- Head of Marine Biology and Oceanography Division, Faculty of Fisheries, Kagoshima University (2013-2014)
- Advisor to President, Kagoshima University (2013-2015)

Major research fields and representative publications:

a. Regional transport system of sediment and nutrients

Ryuichiro Nishi, Julianti K. Manu and Yasuhiro Kokusyo: Analytical estimation of sediment transport in river into a nearshore zone—a life of sediment in an aquatic zone, Proc. of International Seminar on Climate Change Impacts on Water Resources and Coastal Management in Developing Countries, pp.16-1 – 16-9 (ISBN: 978-979-17093-1-6), 2009

b. Nearshore Processes in a Coral Reef

M.P. de Leon, R. Nishi, F. Kumasaka, T. Takaesu, R. Kitamura, A. Otani : Reef rip current generated by tide and wave during summer season: field observation conducted in Yoshiwara coast, Ishigakijima, Okinawa, Japan, Proceedings of the 11th International Coral Reef Symposium, pp.489-493, 2008

c. Shore protection

M. Mutagami, Nishi, R., Sato, M., and Uda, T.: Optimal Design of Artificial Reefs in a Pocket Beach at Nagasakibana, Japan, Coastal Dynamics '01, pp.36-45, 2001.

e. Coastal Environment

R. Nishi, Ohmuta, K., and Ohtomi, M.: Sea turtle protection by means of coastal engineering: field study on sea turtle behaviour, coastal processes of a nesting beach and shore protection in Kagoshima, Japan- Journal of Shore and Beach, Vol. 68, No.3, pp.23-28, July 2000

f. Observation and Monitoring of wave, current and water quality

J., Monroy, Nishi, R. and Sato, M., Nakamura, K., Fujihata, S. and Tsunoue, K.: M.W.L. Fluctuations Inside a Cooling Water Tank Set Inside a Coral Reef, ISOPE'2002.

g. Beach and Dune Erosion

R. Nishi, Sato, M., and Wang, H. : Field observation and numerical simulation of beach and dune scarping, Proc. of 24th International Conference on Coastal Engineering, pp.2434-2448, 1994.

Published more than one hundred research papers:

Area of interest and other related information

Coastal processes and shore protection
Development of nearshore monitoring system
Coastal disasters including typhoons and tsunami
Nutrients supply from land to sea
Nearshore current system and prevention drowning
Inlet stability
Sea turtle monitoring and protection of nesting beach
Application of aqua GIS
Offshore sand mining and environmental assessment
Marine debris
Higher education system

*Research students are welcome to Coastal Environmental Research Group.
The group is looking for possible scientific and engineering collaborations!*